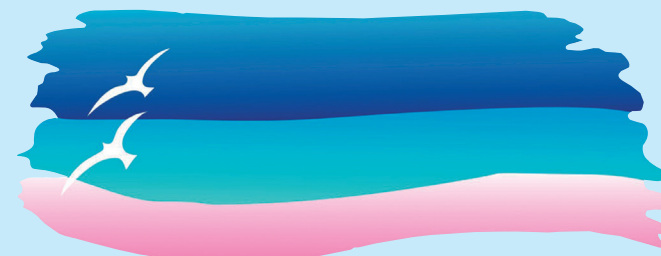


## PARCO NAZIONALE dell' ARCIPELAGO DI LA MADDALENA



### LEGEND

- Park Headquarters
- Museum
- Entrances
- Historic Fortifications

### ZONE

- Zone TC**  
Partial reserve territory  
The current regulations remain valid until the Park Plan comes into force
- Zone TB**  
General reserve territory  
The collecting or damage in any way of indigenous or wild flowers, the removal of wild animals or mineral concretions, the lighting of fires or the erection of tents is prohibited
- Zone TA**  
Integral reserve territory  
The regulations valid to zone TB apply to this area; also prohibited is access to non-residents of the Comune di La Maddalena, the taking of flowers and minerals and abandoning any form of rubbish
- Zone MB**  
General marine reserve  
Any form of unauthorized navigation, anchoring, mooring, sport fishing and diving is prohibited
- Zone MA**  
Integral marine reserve  
The regulations valid to zone MB apply to this area; any form of unauthorized navigation, anchoring, mooring, sport fishing and diving with compressed air is prohibited
- Zone MB**  
within 300 metres from the shore
- Zone MB**  
300-1000 metres from the shore
- PIP**  
Protected diving site  
Any form of unauthorized navigation, anchoring, mooring, sport fishing and diving is prohibited

### GREEN NUMBER

Emergencies	<b>112</b>
Harbourmaster's Office	<b>1530</b>
Environmental Emergencies (including fires)	<b>1515</b>
Medical emergencies	<b>118</b>

### USEFUL NUMBERS

#### LA MADDALENA

Park Management Office	<b>0789 790211</b>
Harbourmaster's Office	<b>0789 730632</b> <b>0789 736709</b>
Carabinieri	<b>0789 736943</b>
Municipal Police	<b>0789 736015</b>
Guardia di Finanza	<b>0789 737397</b>
First Aid	<b>0789 791215</b>
Corpo Forestale e di V.A.	<b>0789 721059</b>

#### PALAU

Police	<b>0789 708000</b>
Guardia di Finanza	<b>0789 709510</b>
Carabinieri	<b>0789 709503</b>
Civil Protection	<b>0789 708660</b>

### PROHIBITED IN THE AREA OF THE PARK

- Abandoning rubbish
- Access to the areas of nesting colonies of birds
- Capturing, killing, damaging or any other disturbance of wild animals
- The removal, even partial, of rocks and minerals
- Collecting or damaging indigenous flowers or flowers that are in danger of extinction
- The lighting of fires
- The introduction of species of flora and fauna that are not indigenous to the park in contrast to the existing flora and fauna
- The use of firearms of any form, poisons or explosives
- The collection of fossils and mineral concretions
- The use of any vehicle except on the main roads

### THE PARK ON LINE

- <http://www.lamaddalenapark.it>
- <https://www.facebook.com/lamaddalenapark>
- <https://twitter.com/lamaddalenapark>
- <http://www.flickr.com/photos/lamaddalenapark>
- <http://www.youtube.com/lamaddalenapark>
- <http://pinterest.com/lamaddalenapark>



MINISTERO DELL'AMBIENTE  
PARCO NAZIONALE  
ARCIPELAGO DI LA MADDALENA

## THE NATIONAL PARK of the ARCHIPELAGO LA MADDALENA



**Park Management Headquarters**  
Via Giulio Cesare, 7 - 07024 La Maddalena (OT)  
Tel. (+39) 0789 790211 - Fax (+39) 0789 720049

[www.lamaddalenapark.it](http://www.lamaddalenapark.it) [www.lamaddalenapark.net](http://www.lamaddalenapark.net)





Hi, my name is Ziniculà. At the university they call me 'Phalacrocorax aristotelis'. In the remainder of Italy I'm known as 'Marangone dal ciuffo', but here, where I was born and grew up, just Ziniculà, and this is the name I like. Come with me and discover the Park and its rules!



**The National Park of the Archipelago La Maddalena** is a land and sea reserve covering 5.134 hectares of coastal land and 13.000 hectares of sea with 180 kilometres of coastline. The Park territory includes all of the Archipelago La Maddalena and all of the islands belonging to the Comune di La Maddalena.

In compliance with EU and national law the Park is divided into zones of different levels of protection. Therefore, boating for pleasure, fishing and diving are permitted only with the appropriate authorization.

**The authorizations are important** for two reasons. Firstly, monitoring the concession of permits gives us real time data on the flux of waterborne tourism and its impact on the protected areas within the park and the authorizations also provide an important source of income for the Park Management organization. This allows us to finance information and environmental education campaigns and promotional activities. It also allows us to provide services to the visitors by defining the bathing areas, giving access to the beaches and the protection of the dunes.



## BOATING FOR PLEASURE

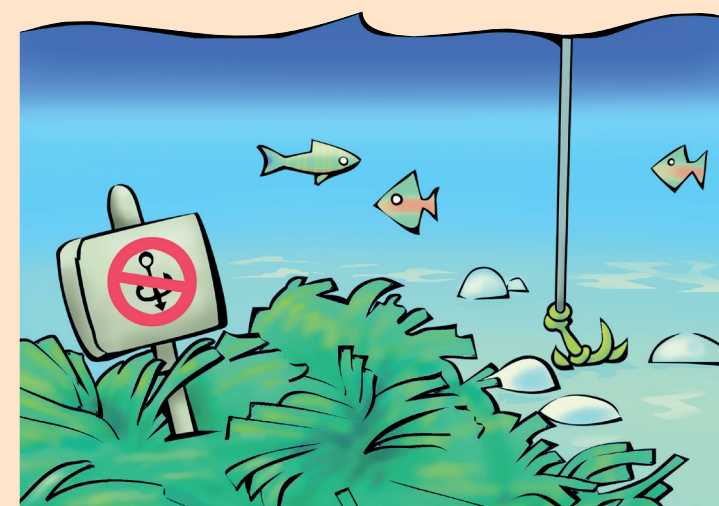


Admittance to the Marine Park Area, excluding MA Zone and the Protected Immersion Points (PIP), is allowed to boats with the proper authorization. All boats are subject to regulations regarding mooring and anchoring.

### Boats entering the area must observe

Maximum speed of 15 knots beyond 300 metres from the shore;  
Maximum speed of 7 knots within 300 metres from the shore.

**Attention!** The Harbourmaster's Office can establish more restrictive navigation limits as and when required.



### Mooring and anchoring activities

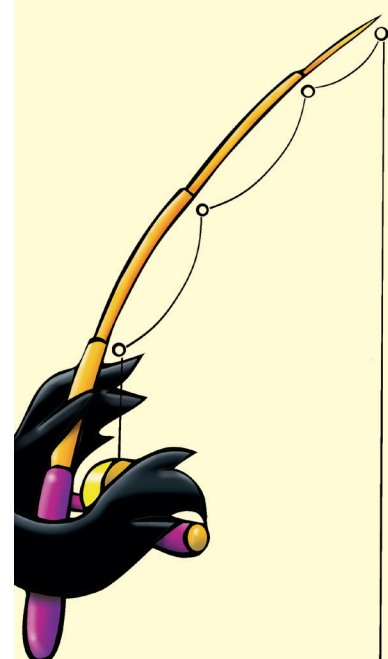
**Buoy-mooring:** from June 1 to October 30, in the zoning areas called MB the mooring at a buoy is allowed only from sunrise to sunset and no later than 10 pm, with the exception of boats with sewage tanks (that can remain afterhours)

**Anchoring:** (exclusively on sandy-pebbly bottoms and never on posidonia meadows): from June 1 to October 30, in the zoning areas called MB the anchorage (must be outside the buoy field boundary) is allowed only from sunrise to sunset and no later than 10 pm, with the exception of La Maddalena residents - keeping boats with crates sewage collection - that can remain afterhours

### ATTENTION Budelli Cala di Roto Island or "Spiaggia Rosa"

The transiting, anchoring, stopping of any boat or craft is prohibited in the area of Cala di Roto or "Spiaggia Rosa". Also prohibited are bathing, snorkeling, diving and walking on the shore. Transit near the limits of the area must be kept below 3 knots.

## SPORT FISHING



Sport Fishing in the Park is allowed only in the MB zone and only to those in possession of the proper authorization.

The quantity of fish caught must not exceed 5 kg per person unless such quantity is exceeded by one single specimen.

The Park distinguishes three types of fishing:

### Beach Casting

**Who can do it?**

Natives or residents of the Comune di La Maddalena, and non-residents in limited numbers;



**With what equipment?**

Beach casting is exclusively allowed with the following equipment:

- not more than 2 fishing rods or fishing lines with no more than 3 hooks each;
- not more than 4 fishing rods or fishing lines

with no more than 1 (one) hook;

- Fishing rod or fishing line using artificial baits;
- Fishing line for cephalopods with no more than one attachment for octopus, squid and cuttle fish;
- Harpoon for collecting sea urchins.

### Boat fishing

**Who can do it?**

Natives or residents of Comune di La Maddalena, and non-residents in limited numbers;

**With what equipment?**

Boat fishing is restricted to the following equipment:

- fishing rod or lines with no more than 3 hooks;
- towed fishing line with no more than 2 lines for each boat;
- fishing line for cephalopods with no more than 1 (one) catching attachment for octopus, squid and cuttle fish;
- fishing nets, not more than 5 (five) per boat;
- buoyed fishing lines, not more than 10 (ten) per boat;
- dragged fishing lines - with no more than 50 (fifty) hooks, exclusively from the 1<sup>st</sup> September to the 30<sup>th</sup> June;
- fish traps, only made of traditional reeds,

- not more than 2 (two);
- harpoon and gas lamp.

### Underwater fishing

**Who can do it?**

Adults who are natives or residents of Comune di La Maddalena.

### Restrictions

From 1<sup>st</sup> June to 30<sup>th</sup> September, snorkeling and diving for fish is allowed



## PROTECTED SPECIES



Within the protected areas the removal of any examples of the following species is strictly prohibited:

**Cernia** (*Epinephelus spp.*) sea bass  
**Corvina** (*Sciaena umbra*) raven fish  
**Nacchera** (*Pinna nobilis*) castanet  
**Patella ferruginea** limpets

The collecting of sea urchins (*Paracentrotus lividus*) - not less than 6 cm in diameter is allowed in the period provided by the regional regulations but the daily take must not exceed more than 25 per person.

The removal of crabs of the species (*Eriphia verrucosa*) - not less than 14 cm in length is allowed from 16 November until 14 September but must not exceed more than 3 examples per person per day.

**Attention!** the removal of others species, even when allowed under the Park's rules, may be illegal according to Regional, National or EU law and you are advised to seek advice from the appropriate authorities.

## DIVING AND SNORKELING



Immersion with compressed air (diving) is permitted only in the area MB to persons with the specific authorization.

**Who can dive?**

Residents and natives of the Comune di La Maddalena correctly equipped along with non-residents and authorized diving centers.

### Protected diving points (PIP)

The PIP are protected areas of particular natural importance offering the maximum security to divers. Diving is allowed exclusively to authorized diving centers and not to private individuals. The maximum velocity of boats within the PIP is 3 knots. Persons in charge of boats within the area must pay the maximum attention to the location of divers and stop their motors in the proximity of diving buoys.

## HOW TO OBTAIN AN AUTHORIZATION



The Park has instigated a detailed procedure for the release of authorizations. A request can be directed through:

- the Park Authorization Office;
- ports and other organizations authorized by the Park;
- the Park website;
- the appropriate ticket office.

Authorizations fall into various categories.

### For pleasure boating:

The Park Authorization Office, the Park website and authorized organizations and the appropriate ticket office.

### Diving with compressed air:

The Park Authorization Office, the Park website and authorized organizations.

### Sport fishing:

The Park Authorization Office.

### How much do the authorizations cost?

All authorizations are free to the natives and residents of the Comune di La Maddalena. Reduced cost or free to people of equal status



All persons who do not belong to the categories indicated above, except for fishing authorization which are always free, must pay the tariff set out in the website [www.lamaddalenapark.it](http://www.lamaddalenapark.it).

### Attention!

The authorizations released by the authorized ticket office are increased by 40% with respect to the ordinary tariff. Authorizations released through the website are subject to a 5% discount.

### The SeaPass

For the natives and residents of the Comune di La Maddalena the Park has reserved a special authorization called SeaPass which authorizes all private activities (pleasure boating, fishing and diving). The SeaPass is free, valid for 5 years and can be obtained exclusively through the Park Authorization Office during normal opening hours.